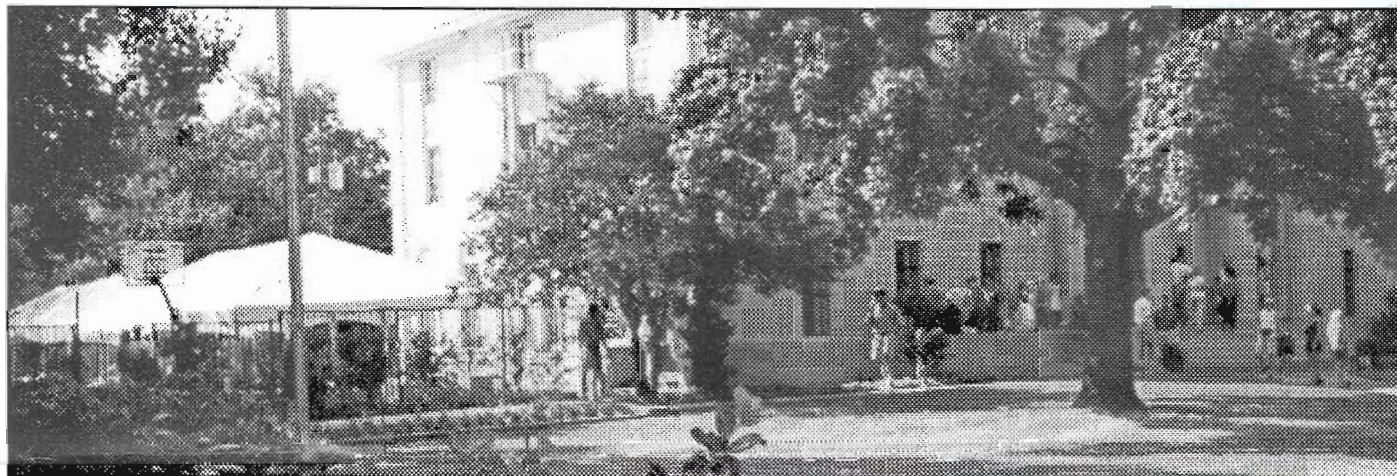


# WOOGLIN

## on Chautauqua



*Beta Alumni Beer and BBQ Reunion 2000*

## Chapter Grades Take First and Second Places

Fall grades for Gamma Phi were the best they have been in several years, with members placing first and the entire chapter placing second among large fraternities.

Beta members averaged 3.070 for the semester, placing first among large fraternities. Lambda Chi Alpha, Phi Gamma Delta and Delta Upsilon were just behind the Betas.

In the overall chapter average, Betas took second place among large fraternities, behind Lambda Chi Alpha. Beta's chapter average was 2.941 for the semester, including pledge grades.

The pledge average was 2.769, placing behind Lambda Chi Alpha, Delta Tau Delta and Kappa Sigma.

Eight members and one pledge achieved 4.00 GPA, and nine pledges scored a GPA of over 3.5.

Betas who made perfect grades

were Steven Carter, '02, Johnny McPhetridge, '02, Brian Torgerson, '02, David Lam, '03, Bridger Cox, '03, Daniel Craig, '03, Connor Cross, '03, Blake O'Brien, '03, Todd Taylor, '03 and pledge Carter Jennings.

Although the fall represented a solid academic semester for Gamma

Phi, the Chapter recognizes that there remains room for improvement. Gamma Phi's goal is to recapture the top spot in grades for members, pledges and the entire chapter. Through continued hard work and diligent rush, our members have high hopes for near-term success.

### IFC Scholarship Standings

	Member	Pledge	Chapter
<b>Beta</b>	<b>3.070</b>	<b>2.769</b>	<b>2.941</b>
Lambda Chi	3.043	2.964	3.020
FIJI	3.020	2.688	2.898
Delta Upsilon	2.988	2.726	2.903
Pi Kappa Phi	2.942	2.694	2.884
Kappa Sigma	2.928	2.827	2.890
SAE	2.922	2.732	2.840
Sigma Nu	2.879	2.223	2.648
Delta Tau Delta	2.838	2.954	2.876
Sigma Chi	2.799	2.556	2.718
Sig Ep.	2.747	2.625	2.708



## Chapter News....

# Chapter Concludes Successful 2000 Rush Week

Last August, Gamma Phi completed formal rush with the signing of 46 outstanding pledges. This class is the product of a diligent and well-run rush directed by Rush Chairman, Casey Barto ('02 Bartlesville), and Assistant Rush Chairmen, Blake O'Brien ('03 Grove), David Phillips ('02 Tulsa) and David Smith ('02 Henryetta).

The Chapter is doing well these days, but work remains to be done. In this regard, rush is the key. This class has five members of the President's Leadership Class (the most of any fraternity - again), nine Beta legacies, four varsity athletes and excellent academic credentials (average GPA: 3.7; average ACT: 25). The consensus among our actives is that this is the most solid class - top to bottom - in the Chapter.

Gamma Phi's rush chairmen and the actives who supported them deserve much praise for their performance. The rush process appears to be getting more competitive with each year. Beta's rivals substantially stepped up their rush summer rush activities this year compared with previous summers. However, our rush team responded with the most organized and diligent rush in recent memory. And they were rewarded for their efforts.

Ideally, of course, the Chapter would have liked to sign the maximum quota of pledges, which was 57. Our rush team could have easily signed 57 pledges. But our rush chairmen were committed to signing only those rushees who met the Chapter's standards for quality character and academics. It is this sort of laudable discipline which is necessary continue Gamma Phi's progress.

Once again, the Chapter rush achievements were made possible by our alumni's financial and organizational support. Your financial support enabled our rush chairmen to wage a relentless rush throughout the summer. The Chapter extends its deepest thanks for your loyalty and generous support. You deserve much credit for this success.

Special thanks also is due those alumni who referred rush prospects to the

our rush team. These referrals are absolutely critical to a successful rush. The Chapter signed a very high percentage of these referrals, about many of whom our rush team would not otherwise have learned until rush week.

It's never too early to start thinking about next year's rush. If you know of any good rush prospects for next summer, please let us know about them! We stand a substantially better chance of signing prospects we learn about in the fall and early spring. Please direct all rush referrals to me at the following address:

Beta Theta Pi  
Zach Allen, Rush Advisor  
Two Leadership Square, 14th Floor  
211 N. Robinson  
Oklahoma City, OK 73102  
Telephone: 405/235-5581  
FAX: 405/235-0333  
Email: zallen@mswerb.com

Thanks again for your support!

Zach Allen '85, Rush Advisor

## Chapter Set to Finish Intramurals on Top

Following the outstanding showing in the 1999-2000 intramural year, the Betas are looking to repeat as All-Greek Champions. The men of Beta Theta Pi had a sensational fall semester of intramural sports. The semester started with a convincing 3rd place finish in Coed Soccer. The team was led by sophomore sensations Connor Cross, Joe Webb, Eric Wiersig, and Jeff Patterson. The points earned jump-started the semester. Senior David Harris headed up the Beta golf team. They played at a local Norman golf course and had a solid outing. Looming around the corner was the Flag Football season, but the preseason football tournament had to be played first.

The Betas, led by senior Matt Clouse, strolled through the tournament with ease. Many thought that this tournament would produce the eventual Flag Football Champion that would be decid-

ed later in the year. Steven Carter and Matt Wilson helped the cause by producing much needed points in the game of Horseshoes.

The Flag Football season started in mid-September, and this was at the same time when tennis started. To my surprise, the tennis stars were not upperclassmen; they were the young freshmen. Led by the twins from Jenks, OK, Clark and Mitch Neely, the Beta house cleaned up in the tennis category. Both men made it to the semifinals, and Clark was the eventual champion.

During the season, there are participation events such as the Fun Run, Frisbee Golf, and Putt-Putt. These events don't have a first, second, or third place. You get 15 points for participation. Thank you to all the men who helped out with these events.

The Flag Football season neared the end and the Beta A-team wasn't in great shape. They were 2-2. They had two losses and the two losses were when not everyone was able to make it to the game because of some other conflict, but they got the much needed win to advance to the playoffs.

The freshman team was doing superb in their first year of Flag Football. They had a 4-1 record and had already advanced to the playoffs. The "first year wonders" were led by Sam Kuzminski, Steve Sinos, Brian McAllister, Jared Stanton, and many other outstanding athletes. They advanced to the semifinals where they lost a heartbreaker. Good job guys!

The A-team had a rough draw in the bracket, but this team had many veterans. In the first round, the team advanced with ease over the Sig Eps. The score was 35-6. We put a flag football "run rule" on them. Also in the first round, the main competition had to forfeit their game. This was extra motivation for the men to go all the way. Hampered by a sore throwing arm, Matt Clouse led the team all the way to the finals. The team would not have gotten there without the fine defensive effort put out by Eric Wiersig,

John Buxton, Nathan Talley, Wade Kovash, Joe Caswell, and Danny Craig. In the final game, the Betas faced the Kappa Alpha fraternity. For two days, the KA's were trash-talking the Betas about this game. The game was over in the first 45 seconds when Matt Clouse connected with Matt Card on a deep ball for the game's first score. The Beta receiving core, Mike Harral, Jeff Patterson, Joe Webb, and Matt Card, ran circles around the KA defense. The scores added up and by the 3rd quarter, the score was 35-0. The KA team hung their heads. The final score was 46-6. The victory was a total team effort by the defense and offense. The 3 Matt's (Clouse, Card, and Pollock) played on both sides of the ball as did Joe Webb and Joe Caswell. The offensive drubbing was led by Clouse, Card, Caswell, Webb, Rob Cunningham, Patterson, and Harral. Congratulations on the win!!

Special thanks goes out to the owner of the team (David Harris) and the general manager (Wade Kovash). David and Wade bought Gatorade for the team every time the team played a game.

The Betas finished up the fall semester with a Handball League. The Betas took home a respectable third place finish. Overall, the men of 800 Chautauqua finished the season in first place, 5 points ahead of the closest competitor, Lambda Chi Alpha. We are looking to repeat from last year. We will be strong in basketball and softball like we always are, and we will have to do well in the smaller sports. This fall semester has left the Betas in the best shape they have ever been in entering a spring semester. Congratulations!

Rob Cunningham '02  
Intramural Chair

## Chapter Logs 1500 Philanthropy Hours

Over the last year, philanthropy has emerged to become one of the priorities and highlights of the Gamma Phi chapter. Throughout the year, we plan, organize, and participate in many volunteer events. All chapter members are required to join

two campus organizations, but our efforts go far beyond these groups. No member is required to participate in our chapter service projects. Nevertheless, brothers continue to make time in their own busy schedules to help those in need. Betas volunteer through chapter events as well as on an individual basis.

In the spring of 2000 brothers participated in many group and individual volunteer activities. Betas participated in the Chi Omega Campus Kidnap. For the event, President Matt Pollock was kidnapped and not released until Betas collected fifty dollars worth of canned food. Over Easter weekend nine Betas gave up a Saturday and painted the Salvation Army Men's Lodge in Oklahoma City. After six hours of painting, the walls of the lodge received a much-needed new coat of paint.

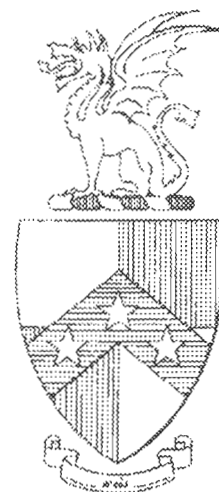
For the 2000 fall semester, Betas contributed more hours to community service than any other fraternity on campus. In September, we co-hosted the third annual International Barbecue with the Kappas. Over forty international students participated. Two weeks later, Betas helped the Salvation Army at their Disaster Relief warehouse in Oklahoma City. We inventoried and distributed thousands of boxes headed for Salvation Army locations across the state. For another group activity, Betas trekked over to the Duck Pond on a rainy Saturday with trash bags in hand. Several hours later, the entire area was trash free. In November, many brothers participated in a canned-food drive. Beta Theta Pi donated over 550 cans to a local food kitchen. Finally, on Dad's Day, 37 Betas ran in the Theta 5K to help raise money for CASA.

Betas also took part in many community service and volunteer activities on an individual basis. Pledge Jake Bramlett voluntarily worked over 400 hours as an Emergency Medical Technician for the Southern Oklahoma Ambulance Service. Christopher Saucedo has volunteered over one hundred hours for the Cleveland County Sheriff's Department. Ted Downing gave nearly sixty hours to the Episcopal Church. Steven Carter and myself com-

pleted over fifty hours of community service on activities ranging from University Sing to Alterra Nursing Home in Norman. Matt Wilson logged forty hours helping Norman Regional Hospital screen local elementary school children's vision and hearing. He also organized the Homecoming blood drive, the largest blood drive on campus. Pledge Derek Ott organized a mentoring program with a Norman area women's outreach center. The program will soon involve the entire chapter.

This coming spring we will continue to donate our time and labor with the same amount of success and enthusiasm as we had in the fall. Already for the spring we have planned several events with Dr. Doug Gaffin, our adopt-a-faculty and professor of biology. Also, by the end of January the entire chapter will have the opportunity to be certified in alcohol education. We have set chapter goals of 1500 community service hours for the semester and to win the President's Trophy, given annually to the most involved and well-rounded fraternity at the University of Oklahoma. Both are very attainable goals. If you have any ideas for events or organizations with which the Gamma Phi chapter should work, do not hesitate to let us know. My email address is jbcoc@ou.edu and my phone number is (405) 360-7860. As always, we appreciate your support.

Bridger Cox '03  
Philanthropy Chair







*Beta  
Alumni Beer  
and BBQ  
Reunion  
September,  
2000*





# Beta Donor Campaign Raises \$35,000

To date, 284 Betas and friends from 63 classes have responded to the 2000-2001 Beta Donors Campaign. The names and classes of these contributors are listed in this newsletter and all of us extend our most sincere thanks for their generous contributions. We continue to be amazed by the support provided by our Fraternal Fifties, i.e. those men who have been members of the Fraternity for 50 years or more. In fact, the ties of Beta Brotherhood are still strong in Beta Donors Robert R. Hayes '30, R.W. Clark '33, Fred E. Brown '34, John W. Kniseley '34, William P. Longmire, Jr. '34, John K. Orr '34, Louis V. Stuart '37, Benson W. Campbell, Jr. '38, Horace K. Calvert '39, Charles P. Gotwals, Jr. '40, Robert S. Frantz '42, Harry H. Diamond '43, Robert W. King '43, Sam Shackelford '44 and Strat Tolson '44 even after 60 years of membership. A special salute is extended to all of Gamma Phi's "silver grays" and to Fallis Beall '55, Dan Moody '69 and Robert Beall '80 who have provided significant financial assistance.

In terms of dollars, we have netted \$35,798.00 to date even after paying the cost of 155 double matted and framed Greg Burns prints of the Beta House. The beautiful print of the Beta House has been delivered to 155 donors as a special recognition to each of them for contributing \$200 or more to the Beta Donors Campaign this year.

We are continuing repairs and replacements at the Beta House. Approximately \$10,000 has been spent on the northwest tile roof of the house and another \$2,000 has been spent on the roof of the kitchen. We have replaced the glass block windows in the second floor bathroom with windows which open. We have replaced the large hot water tank, the primary kitchen disposal and the control box and related switches for the fire alarm system. We are taking bids for new track lighting in the living room, and we are continuing to make piecemeal repairs to the 50 year old wood floor in the living room. Altogether, your money is being used for good purposes as quickly as we receive it. Special thanks also go to the Parents Club, which is continuing to fund landscaping improvements.

We also regret to inform you of the deaths of Duane J. Buckley '39 and George Mason '54 during 2000. Brother Buckley was initiated at OU but later transferred to Illinois, from which he graduated with an engineering degree. Nevertheless, Brother Buckley's loyalty was to Gamma Phi. His widow, who resides in Wichita, contributed \$200 to the Beta Donors Campaign in memory of Brother Buckley. George Mason was another very loyal alumnus of our Chapter. During all the years that Fallis Beall, Bob Klabzuba and I have served as President of the Corporation, Brother Mason never missed contributing to a

Beta Donors Campaign or to an appeal for rush funds. We will miss these loyal alumni who lived the Beta motto.

Thank you again for your support and please encourage your Beta Brothers to contribute now if they have not yet made a donation to this year's Beta Donors Campaign. Our efforts for 2000-2001 continue through May of this year. Contributions may be mailed to: Beta Theta Pi, Two Leadership Square, 14th Floor, 211 N. Robinson, Oklahoma City, OK 73102.

Best regards and

in -kai-,



James C. Elder, President

## SEND US ALUMNI NOTES

Beginning with the next issue of the Wooglin on Chautauqua, we will publish an "Alumni Notes" section providing updates about Gamma Phi alumni. This will be an excellent way to keep your fellow Betas apprised of the latest happenings in your life.

Please send us any announcements you deem appropriate, such as marriages, births, employment changes, kudos and memorials.

Gamma Phi's Chapter Archivist, Hank Ryan '72 will collect and publish all alumni notes. Send your updates to Hank at the following address:

Hank Ryan  
P.O. Box 888  
Norman, Oklahoma 73070-0888  
email: hank@hgryan.com  
voice: 405.842.2985  
fax: 405.842.6816

## Cox, Jennings Named Top Ten Sophomore, Freshman

Bridger Cox, '03, and Carter Jennings, '04, have been named to the lists of Top Ten Sophomores and Top Ten Freshmen, respectively.

Bridger is a National Merit Scholar and a member of the OU Golf team. He served as chapter Philanthropy chairman last year and was elected Social chairman and Philanthropy chairman for this year.

As a freshman, he was a member of the President's Leadership Class, Fellowship of Christian Athletes and was

selected Jim Thorpe Player of the Year. He is listed on the President's Honor Roll and is a Scholastic All-American.

Carter is a member of Student Congress, serving as assistant to the vice chairman. He has been elected Beta Scholarship Chairman for the coming year. He is a National Merit Scholar, was Valedictorian of his high school graduating class and is listed on the President's Honor Roll.

Congratulations to both of these men.

## 2000-2001 BETA DONORS

**1930**  
Robert R. Hayes

**1933**  
W.R. Clark

**1934**  
Fred E. Brown  
John W. Kniseley  
William P. Longmire, Jr.  
John K. Orr

**1937**  
Louis V. Stuart

**1938**  
Benson W. Campbell, Jr.

**1939**  
Horace K. Calvert

**1940**  
Charles P. Gotwals, Jr.

**1942**  
Robert S. Frantz

**1943**  
Harry H. Diamond  
Robert W. King

**1944**  
Sam Shackelford  
Strat Tolson

**1945**  
William J. Hemphill  
Earl B. Mitchell

**1946**  
Jack T. Massey  
Ralph Tolson

**1947**  
Bion J. Acton

**1948**  
J. Wallace Feild

**1949**  
Goodwin Broadus  
Robert C. Millspaugh  
W.S. Warner, Jr.

**1950**  
Sam T. Allen III  
John P. Harlan  
Millard Ingram  
Lloyd Lynd, Jr.  
Richard L. Walton  
Robert J. Young

**1951**  
C. Warren Fatheree  
William R. Shirley

**1952**  
Richard R. Hefton  
William M. McGee  
William J. Ross  
Donald P. Sobocinski

**1953**  
Dwayne E. Godsey  
Warren "Doc" Jordan  
Robert G. McCue  
J. Hugh Roff, Jr.  
Byron H. Schaff  
James R. Snider  
Perry Van Wagenen  
Albert L. Welsh

**1954**  
Robert L. Cathey  
Millard Ingram  
Langford Keith, Jr.  
Burke Mordy  
Lee B. Thompson, Jr.  
Joseph H. Wolfenberger

**1955**  
Fallis Beall  
B.A. Bridgewater  
George Lampton  
Tom H. McCasland, Jr.  
Bradley Million  
John W. Pettit  
James W. Weed

**1956**  
Robert R. Champion  
Jay Magness  
Mark H. McKinsey  
Frank G. Mitchell  
Thomas G. Norris

**1957**  
Lester J. Burkett

**1958**  
William R. Broach  
Philip D. Hart  
William H. McCoy, Jr.  
Richard G. Porter  
T. Joseph Semrod  
Sam L. Wilhite, Jr.

**1959**  
George W. Athey  
Edward A. Luke  
V. Bryan Medlock, Jr.  
Robert Osborne  
Grover Ozmun  
Neil Stanfield



*Chapter President Matt Pollock with Fraternal 50's Betas Bill McGee, Ralph Tolson, John Culbertson and Millard Ingram.*

**1960**  
Roger Bowman  
Dave Dreisker  
Charles F. Long  
Joe R. Love  
Robert E. Slocum

**1961**  
Stan M. Ward

**1962**  
Jim C. Clark  
T.M. Larason  
G.L. Smith

**1963**  
Peter Adamson III  
Guy Bacon  
Don Copeland  
Clark Ellison  
C. Dale Klingensmith  
Roger S. VanDyke

**1964**  
Grant Fair  
Paul N. Stanton

**1965**  
Charles S. Coward  
Donald R. Crews  
Charles D. Watson, Jr.

**1966**  
Charles M. Cole, III  
Wayne E. Copeland, Jr.  
J. Douglas Frantz  
W. Carlisle Mabrey, III  
Joe B. McMillin  
S. Kent Sloan  
C. Mike Smith  
Arthur Thompson

**1967**  
J. Mike Badgwell  
J. William Conger  
Scott D. Lawrence  
John E. Lynn

Edd R. McNeil  
Robert J. Ritz  
Ken Schuerman  
J. Daryl Spence  
Michael H. Strong

**1968**  
Ron Shotts  
Bryant Turpen

**1969**  
Mike Cawley  
Don V. Cogman  
Braden R. Cross  
James C. Elder  
W.B. Johnston  
Wm. O. Johnstone  
John Mantooth  
Dan A. Moody  
Richard D. Padberg

**1970**  
Bob Berry  
Greg Cox  
Don Fleener  
Kurt S. Frantz  
John T. Hardeman  
Don Harral  
John T. Lockard  
Charles P. Rainbolt

**1971**  
Nick Anderson  
Guy L. Berry, III  
R.D. Folsom  
G. Elden Hoffman  
Robert R. Klabzuba  
R. Marc Nuttle  
Peter Pierce  
John Ritz  
Bruce W. Varner

**1972**  
Paul Carlile  
Richard A. Dimick  
Robert W. Dow  
Jim Gotwals

Larry C. Houchin  
J. Steve Miller  
John G. Moore  
Jack Morrison  
Hank Ryan  
Fred O. Turner  
Wayne L. Wasmiller

**1973**  
William L. Berry  
John H. Coker, Jr.  
Stanley P. Defehr  
Mark L. Harris  
Kenneth Lisle  
Thomas T. Moore  
Harbour Whitaker  
E. Bob Yeatts

**1974**  
Steven L. Barghols  
Ronald E. Bowden  
Jerry Kelley  
John A. Klabzuba  
Joseph P. Klabzuba  
Chris H. Pierce  
Bill Sherman  
G.R. Talley  
John Waldo  
R. Wes Wilson

**1975**  
W. Anderson Bishop  
William A. Gossett  
Steve Van Aken

**1976**  
Mark W. Curnutte  
John A. Fuller  
Monty Golladay  
Brad Hoopes  
Ronald C. Krieger  
Jack Rayburn, Jr.

**1977**  
Paul Brown  
Richard L. Campbell  
Ron J. Crosby  
Kim R. Hauger  
James B. Read  
S. Neil Sisson  
D. Rex Urice

**1978**  
Kevin L. Foxx  
Donnie Hughes  
Dan W. Jordan  
Steven C. Jordan  
Warren F. Kruger  
Michael D. McCullough  
John G. Munger  
Obie Moore  
David E. Rainbolt  
Thomas S. Stapleton

*Is your name missing? Our fund drive continues through May, 2001.*





## 2000 Rush Contributors



James P. Akey Jr.  
Ty Akin  
Robert W. Allen  
Zach Allen  
Guy Bacon  
Steven L. Barghols  
Robert L. Barr III  
Robert L. Barr IV  
Fallis A. Beall  
Robert S. Beall  
Guy L. Berry III  
W. Anderson Bishop  
Todd Booze  
Gary L. Brown  
Paul Carlile  
Dewey W. Chambers  
Don V. Cogman  
J. William Conger  
Wayne Copeland  
Charles S. Coward  
Mark W. Curnutte  
John Dew  
Charles Dobbs

Robert W. Dow  
Martin E. Dyer  
Jay Scott Edzards  
James Elder  
Levoy C. Ellsworth Jr.  
Rob Felton  
Kevin L. Foxx  
J. Douglas Frantz  
Robert S. Frantz  
Rick Gibbon  
Monty Golladay  
Jim Gotwals  
Elmer Hale Jr.  
John T. Hardeman  
John P. Harlan  
Mark & Anne Harris  
Jerry C. Hassebroek  
K.R. Hauger  
Robert R. Hayes  
Richard D. Haynes  
Dean Hart Jr.  
William J. Hemphill  
John R. Hillis  
Elden Hoffman  
Dow Hughes

Aaron Douglas Hutton  
Millard Ingram  
Brad Johnston  
Greg T. Jones  
Warren K. Jordan  
Donald S. Kirkpatrick  
Robert S. Klabzuba  
Charles F. Knapp  
Mike Krampf  
Michael J. Labrie  
Scott D. Lawrence  
Everett C. Lees  
Donald Mason Lehman  
Kenneth Lisle  
Charles F. Long  
William P. Longmire Jr.  
Robert L. Lunsford  
Carlisle W. Mabrey  
Patrick L. Mandeville  
Jack T. Massey  
Blaine Matray  
Curtis A. McCarty  
T.H. McCasland Jr.  
William M. McGee  
Edd R. McNeil

V. Bryan Medlock Jr.  
Robert C. Millsbaugh, Jr.  
Dan A. Moody  
John G. Moore  
Ronald W. Moore  
Steven E. Moore  
Burke Mordy  
Mike Mordy  
Jack T. Morrison  
John G. Munger  
Robert N. Naifeh Jr.  
John K. Orr  
Jeremy T. Phelps  
Jim Pickens  
Chris H. Pierce  
Richard G. Porter  
Gordon Pugh  
Steve Rahhal  
David E. Rainbolt  
Jack E. Rayburn Jr.  
Brett Robinson  
J. Hugh Roff Jr.  
Bill Ross  
Byron H. Schaff  
Christian C. Sieck

Neil S. Sisson  
S.K. Sloan  
Carl M. Smith  
G.L. Smith  
James R. Snider  
William T. Speller  
Michael H. Strong  
Louis V. Stuart  
Louis V. Stuart Jr.  
G.R. Talley  
Arthur Thompson  
Frank Thompson  
Lee B. Thompson Jr.  
Lance S. Tolson  
Charles E. Towe Jr.  
Fred Turner  
Stephen M. Van Aken  
W.S. Warner Jr.  
Wayne L. Wasemiller  
Charles D. Waston Jr.  
Sam L. Wilhite Jr.

## More 2000-2001 Beta Donors...

### 1979

John T. Lilly  
Robert N. Naifeh, Jr.

### 1980

Robert Beall  
Richard T. Lane  
Jesse L. Leeds, Jr.  
Jeff Scott  
Kevin Wilson

### 1981

T.H. McCasland, III

### 1982

John E. Campbell, Jr.  
Cary Gathright  
John R. Hillis  
G. Calvin Sharpe  
Lance S. Tolson

### 1983

William S. Banowsky, Jr.  
Donald M. Lehman  
A. Andrew Louis  
Brooks G. Mitchell

### 1984

R. Todd Boone  
R. Tyler Boone

William K. Briggs  
Steve Emmons  
Stuart W. Emmons  
Jay P. Fitzgerald  
Patrick D. Jordan  
Todd J. Lisle  
R. Park Medearis  
Victor E. Morgan  
Steven Nell  
Jeffrey T. Roberts  
Rob F. Robertson

### 1985

Tyson V. Akin  
Zachary W. Allen  
Jon D. Baccus  
Robert L. Barr IV  
Carter Baumert  
Paul Bevilacqua  
Charles Dobbs  
Robert R. Felton  
Todd Huckabay  
Dow R. Hughes  
Kenneth V. Hughes, III  
Charles Franklin Knapp  
Brad H. Liebmann  
Brent McKee  
Mark Meyer

Bryan K. Lansford  
Jeffrey S. Norman  
Scott E. Rahhal  
Raymond A. Tatch  
Charles E. Towe, Jr.  
Stan M. Vlasimsky

### 1985

Jay L. Wade  
Randall S. Wells  
C. Robert Wright

### 1986

David Box  
James G. Nutter  
Brett Robinson

### 1987

Cecil I. Craft III  
Dave R. Hughes  
Bill Settle  
Blake Stanfield

### 1988

Michael R. Hall  
Bo Harrison  
Mike Krampf  
Maurice B. Lampl III

Lindbergh J. Rahhal  
Scot Sullivan

### 1989

Daniel Medley

### 1990

Todd K. Booze  
Michael J. LaBrie  
Mark M. Lauer  
Scott P. Sullivan

### 1991

John M. Charvat  
Phillip Warren Farmer  
Dustin C. Gibson  
Scott Lewis  
Keith R. Moore  
Jay W. Penn  
Chris Sieck  
William P. Towe  
Richard J. Walsh

### 1992

James T. Johnson III  
Clint Pitzer

### 1993

Blaine Matray

### 1994

David Hicks

### 1995

Jason Lees

### 1996

Brent Benn

### 1999

W. Jefferson Elder  
Everett Lees

### IN MEMORIAM

Duane J. Buckley '39  
Ross Duncan '85  
Michael R. Hall '77  
John C. Van Aken '61

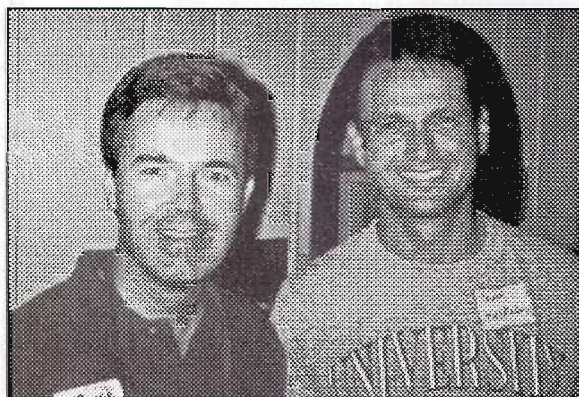
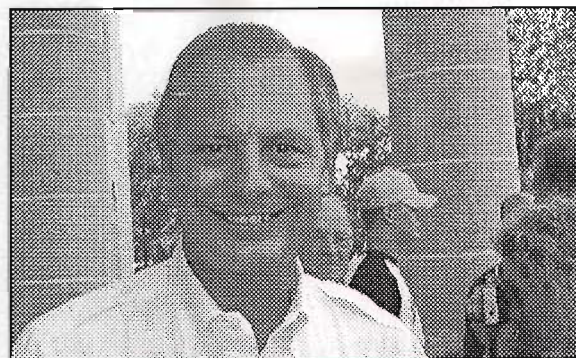
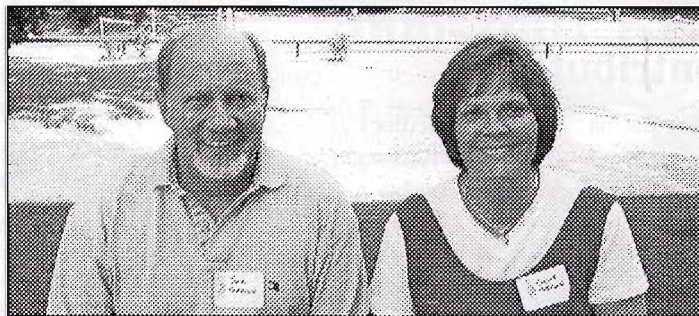
### DISTRICT CHIEF

William T. Speller

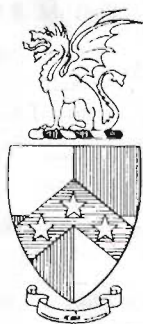
### FRIENDS

Mr. & Mrs. Sam Ott  
Chris & Gary Purcell





*Beta Alumni  
Beer and BBQ  
Reunion  
September, 2000*



*Beta Theta Pi  
Two Leadership Square, 14th Floor  
211 North Robinson  
Oklahoma City, OK 73102*



H. G. Ryan III (1972, #1421)  
2616 NW 68th  
Oklahoma City, OK 73116-4710

Parents and Alumni:  
Please send us address updates!

73116+4710

