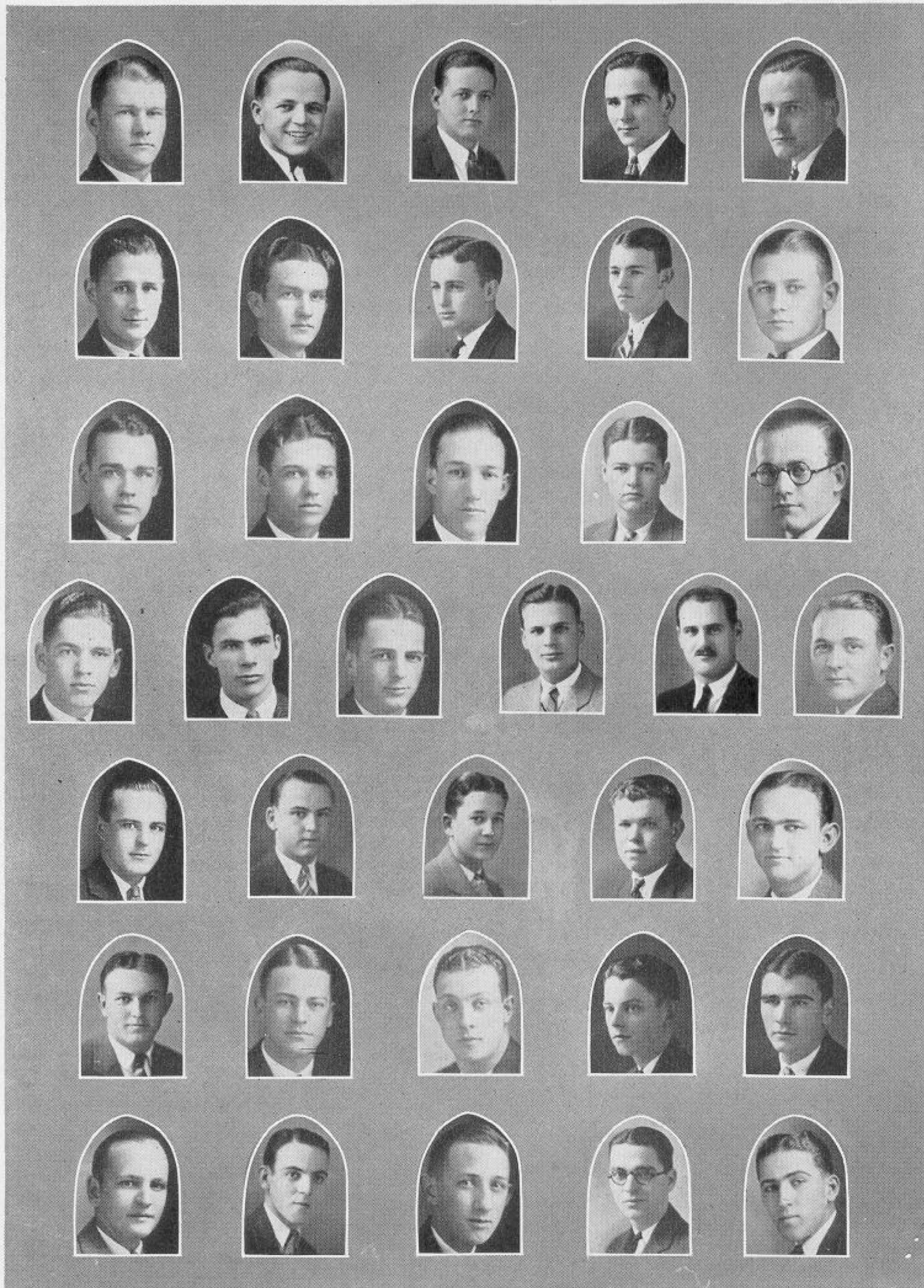


The Sooner of Progress

Beta Theta Pi



Top Row—Kniseley; Yoder; Ford, R.; Wright; Thompson, L.
Second Row—Long; Montgomery; Grimes; Galbreath; Holmberg.
Third Row—Baker; Nelson, A.; Nelson, J.; Starkey; Thompson, R.
Fourth Row—Smith; Blanchard; Schaff; Ingham; Murchison; Stroud.
Fifth Row—Lykins; Redd; Johns; Clement; Pearson.
Sixth Row—Lamb; Brecheisen; McCullouch; Peterson; Muldrow.
Bottom Row—Edgerton; Harris; Ford, C.; Entriken; Hanson.

Beta Theta Pi



Founded at Miami University, 1839
Oklahoma Chapter, Gamma Phi, 1907

Membership—35,192

Number of Chapters—84

MEMBERS

Graduate

EDWARD H. McCOLLOUGH

1925

WALTER BAKER, *Enid*
WILLIAM BLACK, *Ft. Smith, Ark.*
VERNON COOK, *Guthrie*
PERRY HANSON, *Oklahoma City*

HARRY KNISELEY, *Tishomingo*
LEALON LAMB, *Clinton*
J. HERMAN LONG, *Muskogee*
ERNEST B. LYKINS, *Ardmore*

FRED H. MURCHISON, *Muskogee*
ALBERT NANCE, *Norman*
RALPH G. THOMPSON, *Nowata*
LEE B. THOMPSON, *Nowata*

1926

ELMER JAMES DOWNING, *Tulsa*
CHARLES E. FORD, *Enid*
RICHARD FORD, *Poteau*

WAYMAN J. THOMPSON, *Nowata*
DONALD F. WRIGHT, *Miami*
E. PAUL PETERSON, *Haskell*

ROBERT A. YODER, *Tulsa*
GEORGE H. STROUD, *Valliant*

1927

J. SPENCER ENRIKEN, *Enid*
RICHARD S. BRECHEISEN, *Muskogee*
LINNE HOLMBERG, *Norman*

KERMIT W. INGHAM, *Okla. City*
ALBERT N. NEAL, *Cleveland*
JOHN R. PEARSON, *Muskogee*

ROBERT RINGO, *Nowata*
BYRON H. SCHAFF, *Tulsa*
S. JOHN SMITH, *Sapulpa*

1928

*STANLEY BLANCHARD, *Purcell*
*EGBERT CLEMENTS, *Norman*
*CHARLES EDGERTON, *Sapulpa*
GLENN P. GALBREATH, *Tulsa*
PHILO W. GRIMES, *Tulsa*

WALTER D. HANSON, *Okla. City*
PERCY M. JOHNS, *Ardmore*
CHAS. T. McCOLLOUGH, *Joplin, Mo.*
*J. R. MONTGOMERY, *Marlow*
HAL MULDROW, *Norman*

AYERS NELSON, *Muskogee*
J. C. NELSON, *Muskogee*
JAMES REDD, *Sapulpa*
EDWIN R. STARKEY, *Okla. City*
PHIL J. LEHNHARD, *Sapulpa*

*Pledge.

